

L'agricoltura italiana deve confrontarsi in modo crescente nel contesto internazionale all'interno di una forbice primaria rappresentata da:

- a) Cambiamenti climatici inclusi gli eventi meteorici estremi
- b) Invasioni Biologiche di Organismi e Microrganismi nocivi alieni



Importazione volontaria di antagonisti naturali, principalmente predatori e parassitoidi, dall'areale di origine della Specie Aliena con lo scopo di costruire un nuovo equilibrio mantenendo le popolazioni del fitofago al di sotto della soglia di danno.



REVIEWS REVIEWS REVIEWS

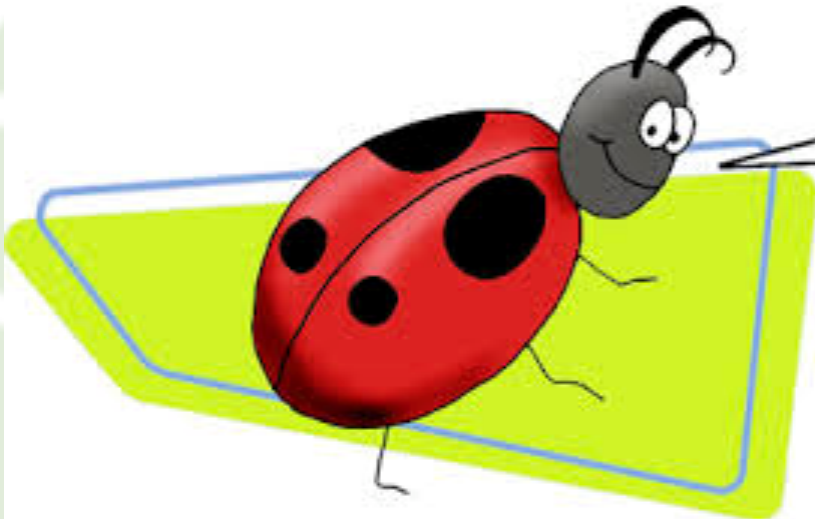
132

Biological control of invasive species: solution or pollution?

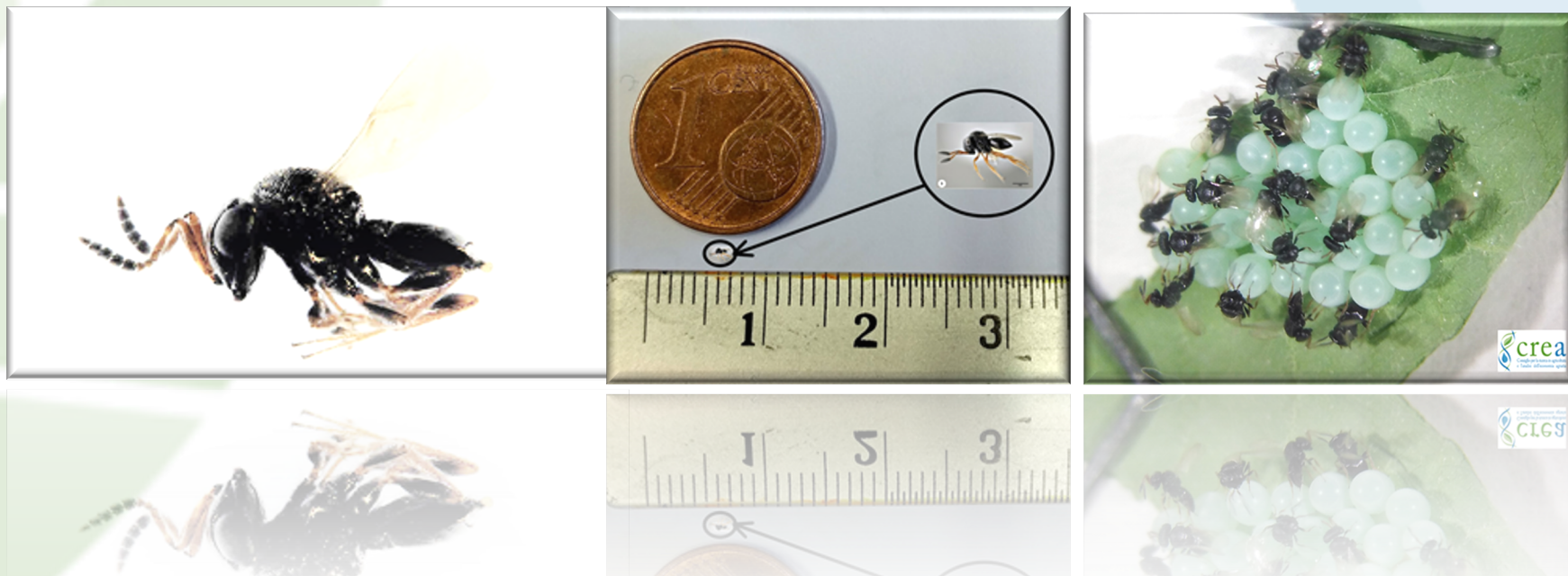
Russell H Messing* and Mark G Wright

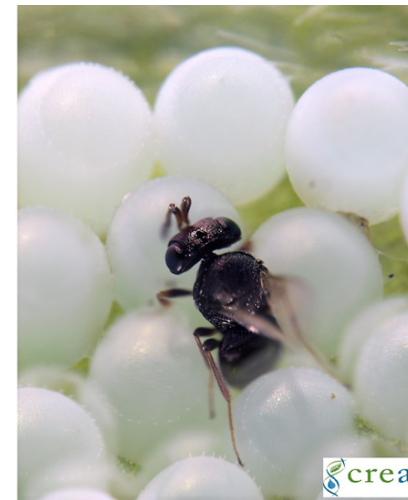
Biological control of invasive species using co-evolved natural enemies has long been considered a safe, cost effective, and environmentally benign tool for pest management. However, recent work has questioned the extent to which these imported natural enemies have negative impacts on populations of non-target species. The result has been a vociferous debate about the safety and proper role of biological control, often without convincing evidence on either side. The issues are particularly well focused in Hawaii, with its high numbers of both endemics and invasive pest species. We review the data concerning environmental impacts from past biocontrol projects, discuss the patterns and generalizations that emerge from retrospective analyses, and consider some new techniques for risk assessment. We then emphasize the need for a federal regulatory framework that is rational, efficient, transparent, and ecologically meaningful.

Front Ecol Environ 2006; 4(3): 132–140



Il Programma Nazionale per il controllo della Cimice asiatica con l'utilizzo di antagonisti naturali in un intervento di “Lotta Biologica Classica”





MIPAAF - Servizio Fitosanitario Centrale

CREA Centro di Ricerca Difesa e Certificazione

Servizi Fitosanitari Regionali di

Emilia Romagna

Veneto

Piemonte

Friuli Venezia Giulia

Lombardia

Prov. Aut. Bolzano

Trento

Univ. Torino, Modena e Reggio Emilia, Bologna, Padova

Fond. E. Mach

Centro di Laimburg

